

ElfKey Software Configuration

Guide_v1.0

Introduction

This documentation specifically addresses the configuration software for **LYRIXEN** Programmable HID Input Device — ElfKey. Through the ElfKey software, users can personalize their device functionality to fully utilize all product capabilities. All configurations are stored in the device hardware and can be used normally without requiring the software to run in the background.

Technical Partnership Notice

LYRIXEN has established a technical partnership with PCsensor to jointly provide users with a hardware-software ecosystem. The ElfKey configuration software is developed and maintained by our technical partner PCsensor. You may see their branding in the software interface or download pages. This partnership ensures your LYRIXEN device receives the most stable and advanced technical support. LYRIXEN takes full responsibility for product quality and customer service.

1. Software Download and Installation

1.1 Download ElfKey Software

Scan the QR code below or visit the following URL to access the download page:

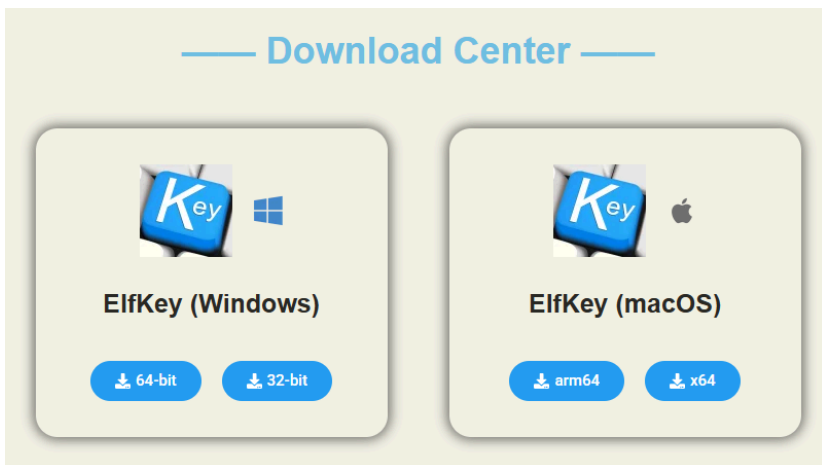


URL: <https://lyrixen.com/software>

1.2 Select the Correct Version

Choose the installer for your operating system:

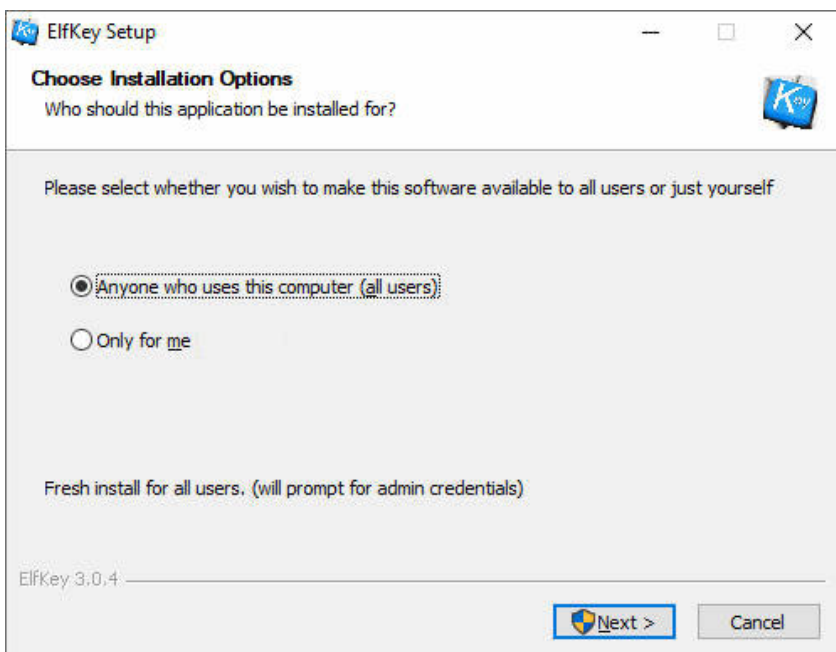
- **Windows** (supports Windows 10/11)
- **macOS** (supports macOS 12 Monterey and later)



1.3 Install the Software

Windows:

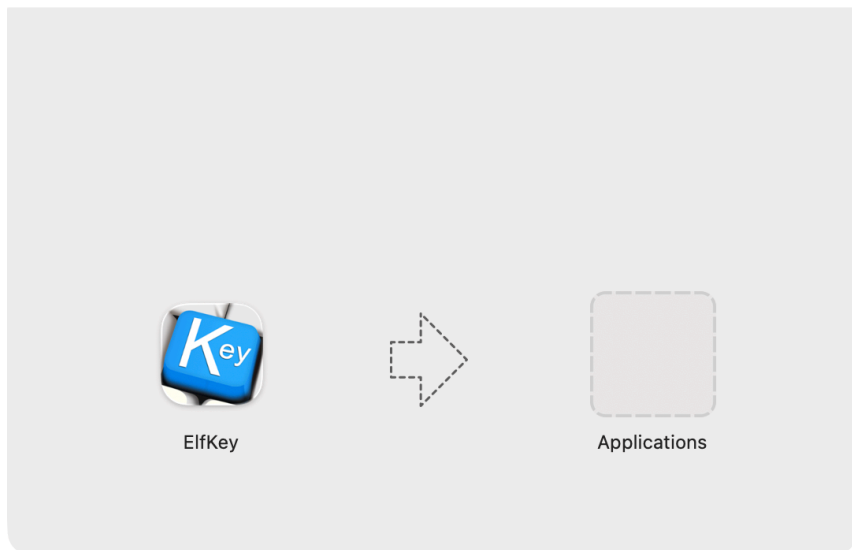
- Double-click the downloaded .exe file.
- Follow the on-screen instructions to complete the installation.



macOS:

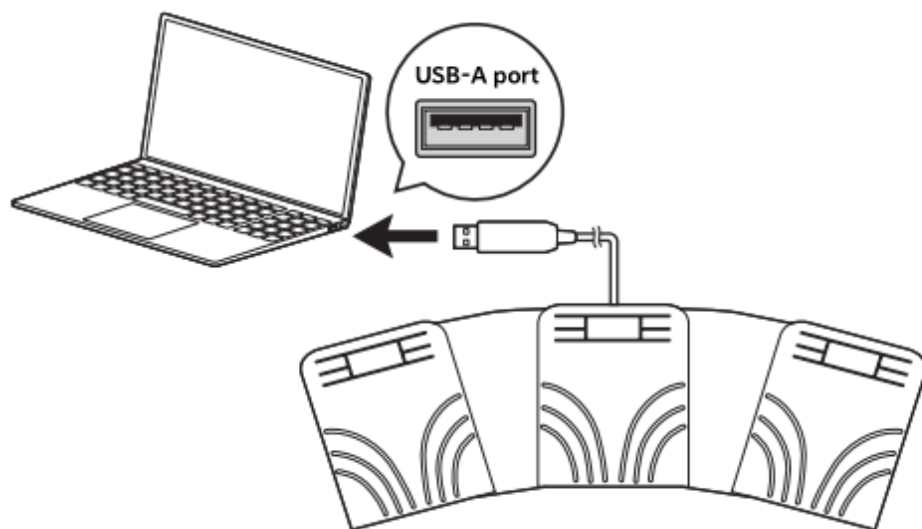
- Open the downloaded .dmgfile.
- Drag the ElfKey app icon to the Applications folder.

ElfKey 3.0.0-arm64



2. Software Configuration

2.1 Connecting the Device to Your Computer



Insert the USB-A plug into an available USB-A port on your computer.

Connect the device to your computer. Your system will typically recognize it as a "USB Input Device" or similar name, which you can verify in the system notification area or Device Manager.

A confirmation prompt will appear once connected—this varies by system and may take a few moments.

Important: Before opening the setup software, please make sure you see the on-screen notification (such as "Your device is ready to use") or a hardware installation pop-up. This ensures the device is fully recognized

and ready for configuration.

Note:

- Depending on your computer model, the device may not be recognized after the computer wakes from sleep mode (Suspend/Standby).
- If this happens, simply disconnect the USB cable and plug it back in.

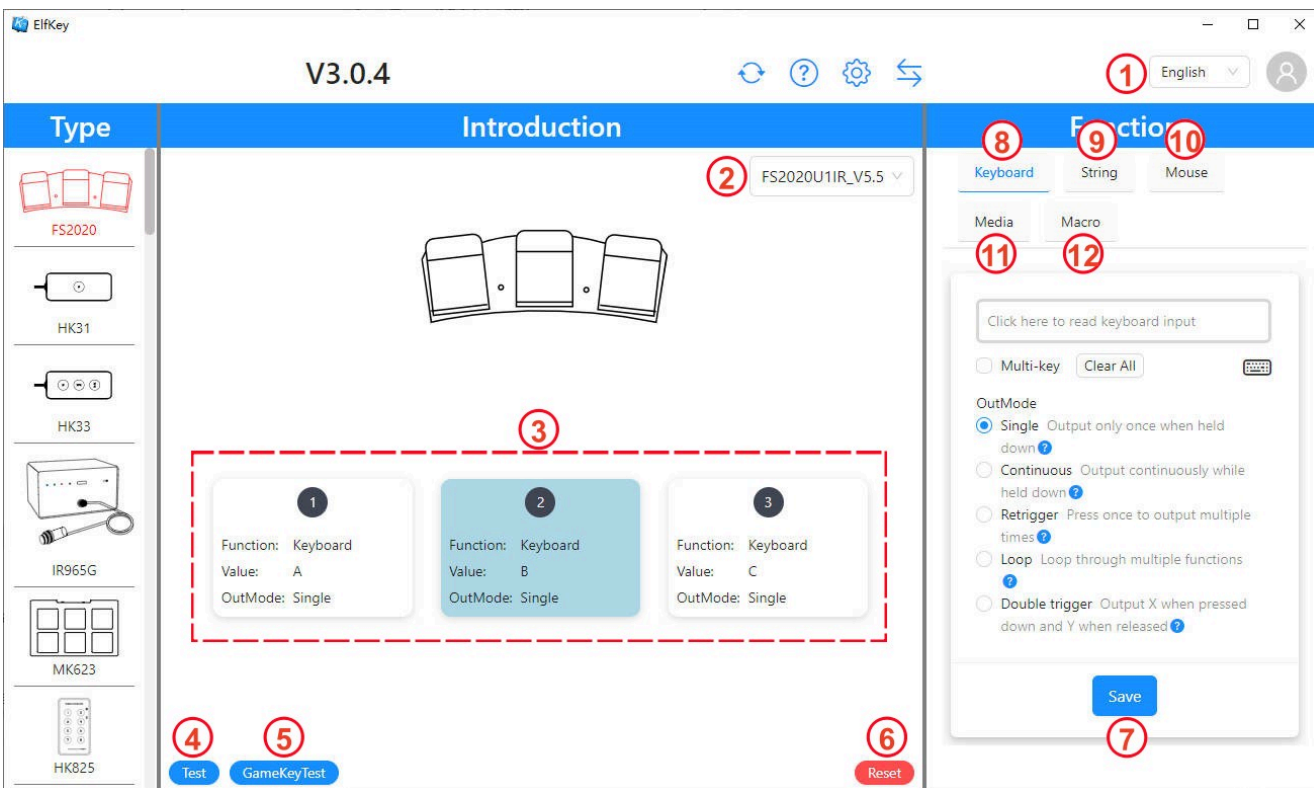
2.2 Launch the Configuration Software

Once your device is ready (as confirmed in the previous step), double-click the ElfKey icon on your desktop to launch the configuration software.



2.3 Using the Main Interface

Upon successful connection, the software will open directly to the main configuration interface, where you can customize your device's settings.

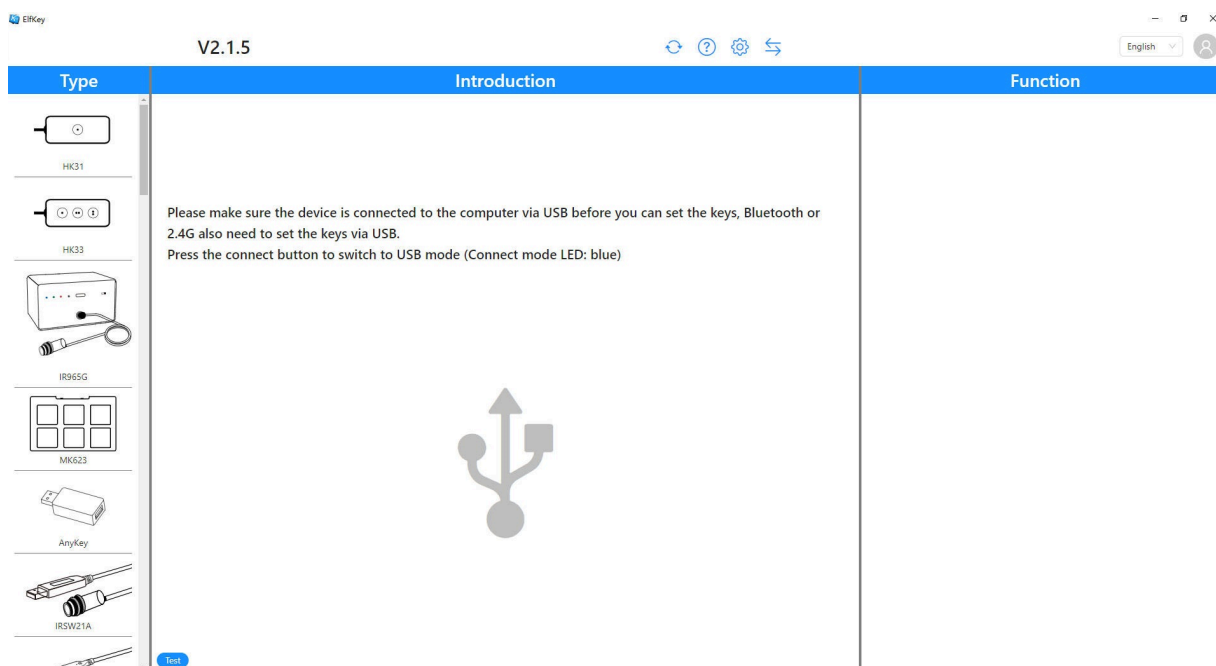


① **Language:** Select the software interface language: English, Japanese, or Chinese (Simplified).

- ② **Device Selection:** The connected device model is auto-detected here. If multiple devices are connected, use the dropdown to select the target one. The current firmware version is also displayed.
- ③ **Key Mapping Panel:** Click on any key in the diagram to select it. Its current Function, Value, and OutMode settings are displayed in the boxes below. Modify its assignment in the right panel.
- ④ **Test:** Click to trigger the selected key and test its basic functionality.
- ⑤ **Gamekey Test:** This feature is only available for certain products with gaming modes.
- ⑥ **Reset:** Instantly restores all keys on the device to their original factory default assignments.
- ⑦ **Save:** You must click this button to save all configuration changes to the device. A confirmation message will appear upon success.
- ⑧ **Keyboard Function:** Assign a single keystroke or a multi-key combination (shortcut, e.g., Ctrl+C) to the selected key.
- ⑨ **String Function:** Assign a text string (e.g., username, command) to the selected key. It can output a sequence of up to 38 alphanumeric characters and common half-width symbols.
- ⑩ **Mouse Function:** Assign mouse actions like clicks, movement, or scrolling to the selected key.
- ⑪ **Media Function:** Assign system/media control functions like volume adjustment, play/pause, or track skip to the selected key.
- ⑫ **Macro Function:** Record or edit a complex series of actions combining keystrokes and mouse events. You can insert delays between steps for precise timing.

2.4 If the Device Is Not Recognized

If the software fails to detect your device, you will see the following screen:



To resolve this:

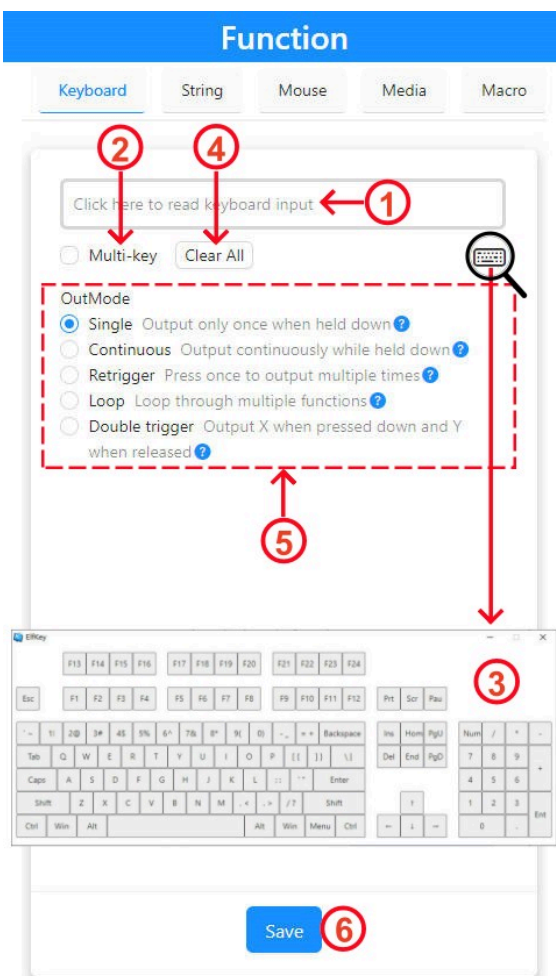
- Ensure the device is properly connected and that you saw the system's “ready to use” notification.
- Try disconnecting and reconnecting the USB cable.
- Restart the software.

Note: If the computer was just brought back from sleep mode, you will typically need to reconnect the USB cable for the device to be recognized again.

3. Five Major Function Modes

3.1 Keyboard Function

You can assign a single keystroke or combine multiple keys to create a shortcut (e.g., Ctrl+C or Ctrl+V) and assign it to the selected key.



① **Assign a Key:** Click inside the field, then press the desired key on your physical keyboard. The key name (e.g., A, Ctrl, Shift) will appear here.

② **Multi-key:** Check this box to assign a shortcut. You can combine up to 6 different keys (e.g., Ctrl+Alt+Del).

③ **On-Screen Keyboard:** Click keys on this virtual keyboard to assign them, as an alternative to using your physical keyboard.

④ **Clear Settings:** Click to clear all keys currently assigned in the field above.

⑤ **OutMode (Output Mode):**

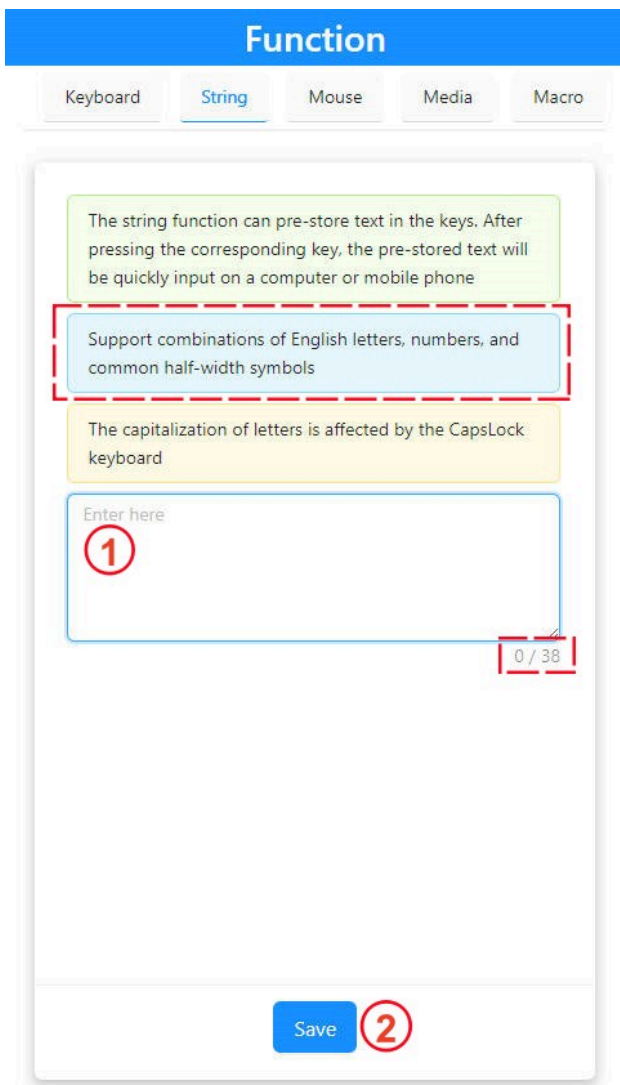
Select how the key or shortcut behaves when you press and hold the selected key:

- **Single:** Triggers once when pressed.
- **Continuous:** Repeats as long as the button is held (Ideal for rapid-fire gaming actions)
- **Retrigger:** Outputs multiple times rapidly with a single press.
- **Loop:** Cycles through multiple assigned functions.
- **Double trigger:** Performs one action on press and a different action on release (Perfect for Push-to-Talk or momentary triggers)

⑥ **Save:** You must click Save to apply your new keyboard shortcut to the device. Changes are not applied until you save.

3.2 String Function

This function allows you to store a predefined text string (such as a common phrase or command) in a key. When the key is pressed, the string is typed out automatically.



① Enter your text:

- Click in the “Enter here” text box.
- Type the desired text string. You can use English letters, numbers, and common half-width symbols.

② Save the setting:

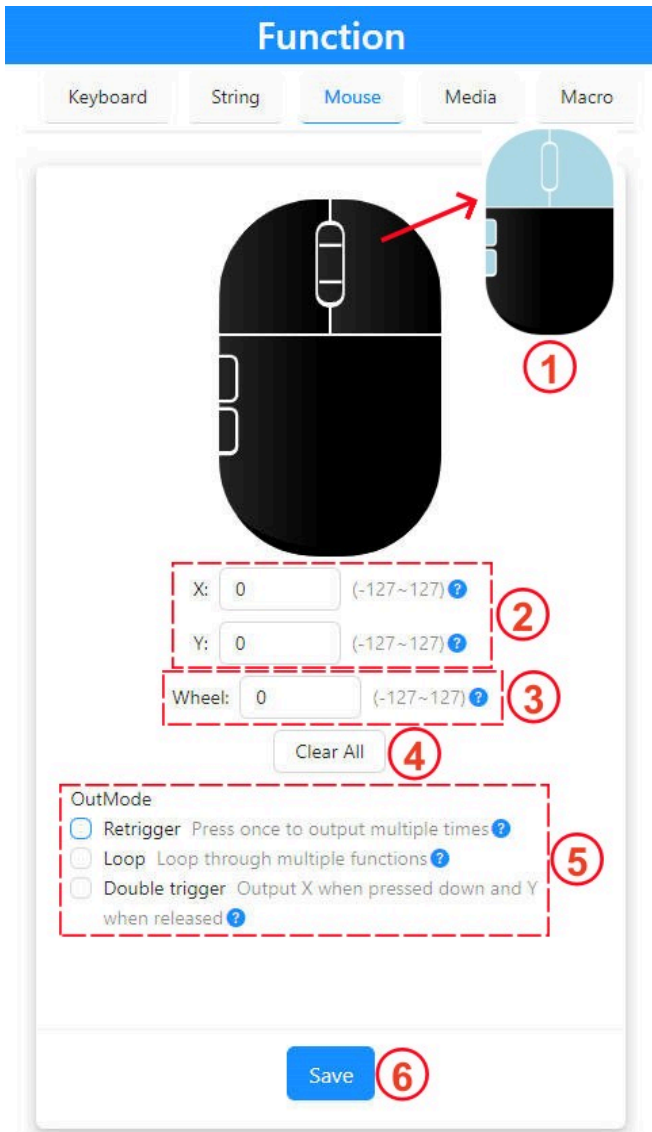
- Click the “Save” button to assign the string to the selected key.
- Remember: Changes are not applied until you click “Save”.

Note:

- Letter case is affected by your keyboard’s Caps Lock state.
- The counter below the box shows the number of characters used (e.g., 0 / 38). The maximum length is 38 characters.
- **Special Characters & IME:** Strings are output based on your computer's current Input Method Editor (IME) and keyboard layout. For consistent results, ensure your system is set to the correct language/region before saving.

3.3 Mouse Function

This function allows you to assign mouse actions including clicks, cursor movement, and scrolling to your device.



① Select Mouse Button Actions:

choose a basic mouse click action, such as:

- Left Click
- Wheel Click (Center Button)
- Right Click
- Back (Browser Back)
- Forward (Browser Forward)

② Set Cursor Movement (X / Y):

To move the cursor, assign values to the X (horizontal) and Y (vertical) axes.

- **X Axis:** Enter a value from -127 to 127
 - Positive values move the cursor to the right
 - Negative values move the cursor to the left
- **Y Axis:** Enter a value from -127 to 127
 - Positive values move the cursor down
 - Negative values move the cursor up

③ **Set Scroll Wheel Action:**

To enable scrolling, enter a value in the Wheel field. Valid range is -127 to 127.

- Positive values scroll down (or away from you).
- Negative values scroll up (or toward you).

④ **Clear All Settings:** To reset the X, Y, and Wheel values to 0, click the “Clear All” button.

⑤ **Select OutMode (Output Mode):**

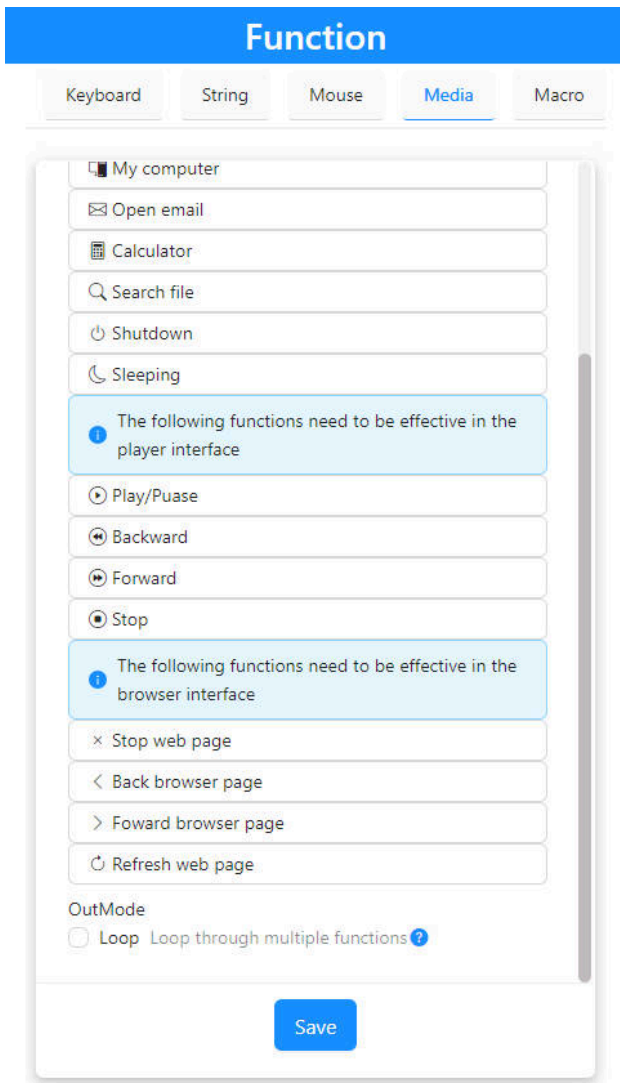
Choose an OutMode to define how the assigned action repeats:

- **Double trigger:** Output one action (X) on press, and a different action (Y) on release.
- **Loop:** Continuously loop the output while the key is held.
- **Retrigger:** Press once to output the action multiple times.

⑥ **Save Your Settings:** After configuring, click the blue “Save” button at the bottom to apply the settings to the device. Remember: Changes are not active until you click Save.

3.4 Media Function

This function allows you to assign media playback controls, system commands, and other application shortcuts to a device.



① Select a Function:

Refer to the “Media” function menu for the full list of available shortcuts.

* Application-Specific Notes:

- Functions like Play/Pause, Backward/Forward, and Stop need to be used within a supported media player application.
- Functions like Stop web page, Backward/Forward browser page, and Refresh web page are designed to work within a web browser.

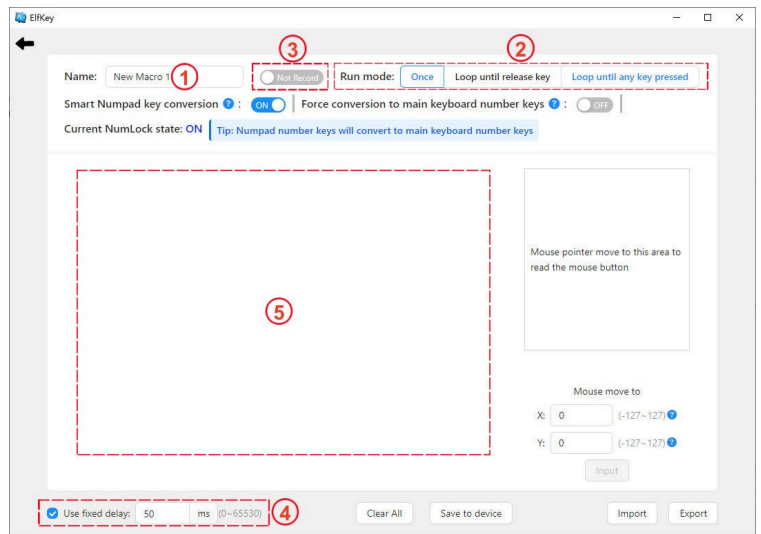
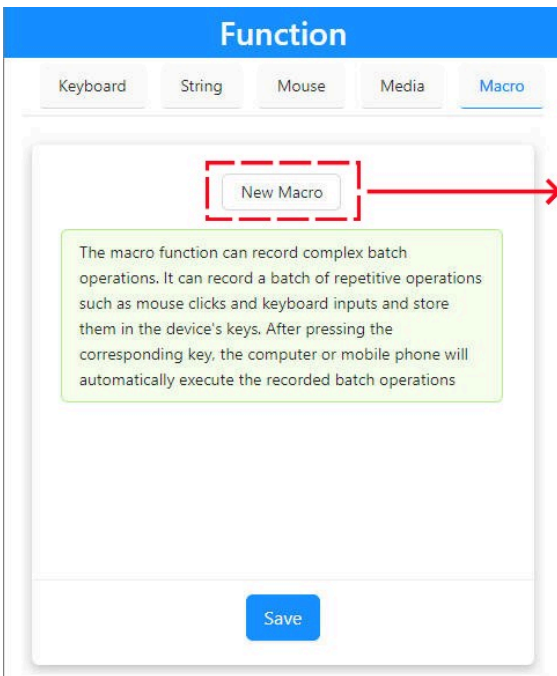
② Assign the Function to a Key:

- Method 1 – Select and Save: Click on the desired function in the list, then click the blue “Save” button at the bottom.
- Method 2 – Drag and Drop: Click and hold the desired function, then drag it directly onto the target key graphic on the device layout. Release to assign it.
- Remember: Any assignment is only confirmed and applied to the device after you save (using either method above).

3.5 Macro Function

A macro is a recorded sequence of actions (like keystrokes, mouse clicks, and movements) that you can assign to a single key. When you press that key, the entire sequence plays back automatically, saving you from performing repetitive tasks manually.

3.5.1 New/Edit Macro Window



Macro Editor Window: This is where you set up and record your macro actions. The main settings are:

① **Name:** Enter a name for your macro (max 32 characters).

② **Run Mode:**

- Once: Plays the sequence one time.
- Loop until release key: Continuously repeats the sequence while the assigned key is held down.
- Loop until any key pressed: Continuously repeats the sequence until any other key on the device is pressed.

③ **Recording Controls:**

Click the “Not Record” button (it will change to “Recording”) to start capturing your inputs.

To record keystrokes: Simply press the keys on your keyboard.

To record mouse actions: Move your cursor into the designated mouse recording area on the right, then perform clicks or movements.

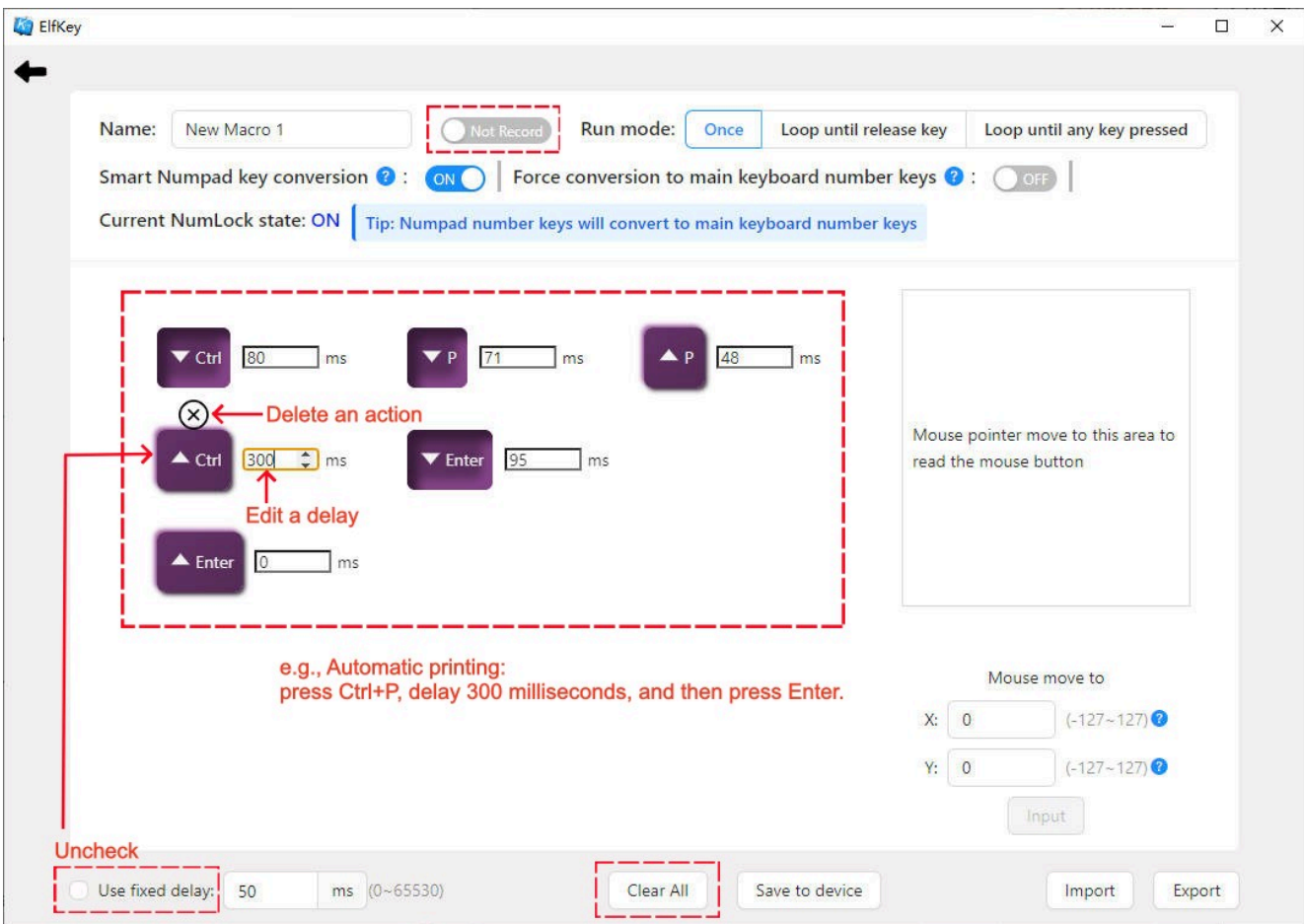
④ **Delay Settings:**

Use fixed delay: Check this box to insert a fixed interval (in milliseconds) between every recorded action.

If unchecked, the natural time gaps between your actions during recording will be used as the delays.

⑤ **Action List:** Your recorded keystrokes and mouse actions will appear here. You can have up to 30 actions in one macro.

3.5.2 Editing, Saving, and Managing Macros



After recording, you can fine-tune, save, and manage your macro.

a. Edit the Action List

- Turn off the “Recording” mode to begin editing.
- To delete an action: Hover your mouse over an action in the list. Click the “x” icon that appears to remove it.
- To edit a delay: If you did not use a fixed delay, click the delay value (in milliseconds) next to an action to change it.
- To clear all actions: Click the “Clear All” button at the bottom.

b. Save to Device

- Click the “Save to device” button to store the final macro in the device’s memory.

c. Import and Export Macros

- Use the “Import” and “Export” buttons to load a macro from a file, or save your macro to a file for sharing or backup.

3.5.3 Assigning a Macro to a Key

There are two ways to assign a macro to a physical key on your device:

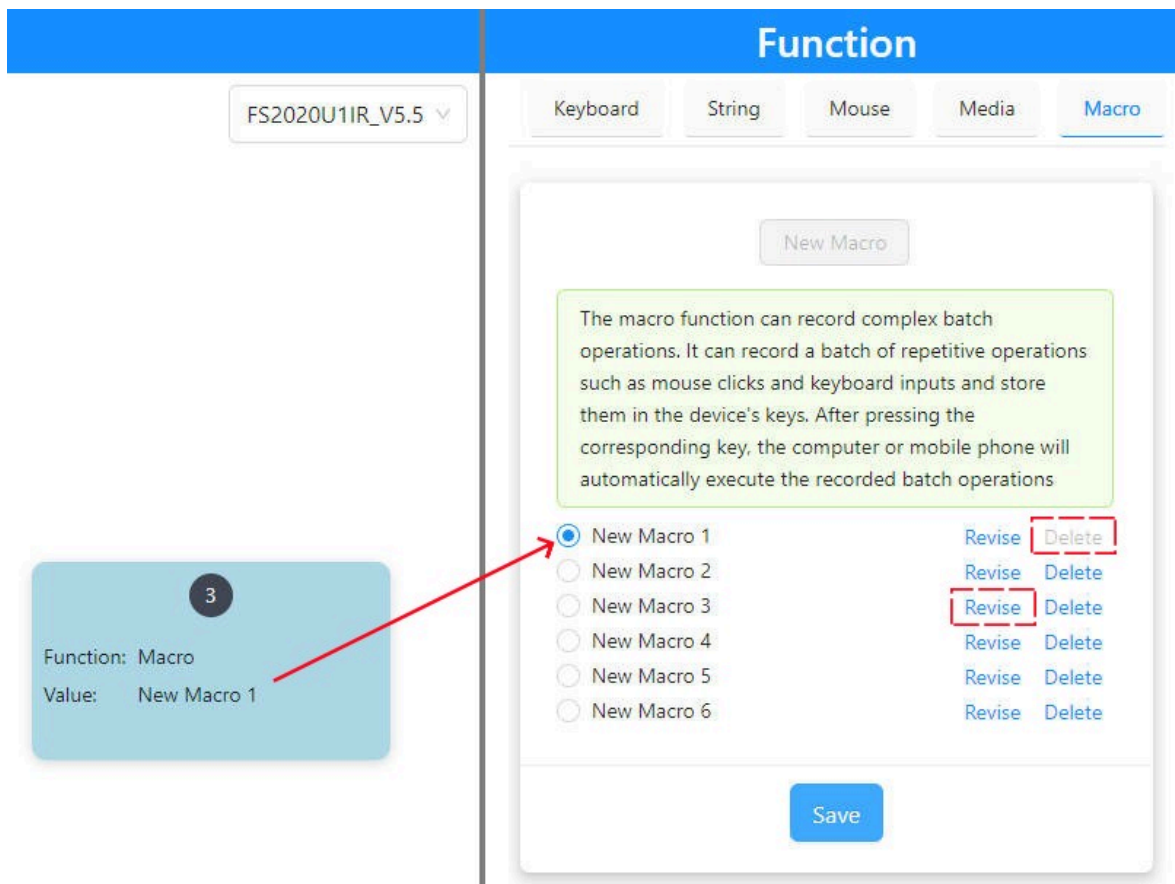
a. Select and Save Method:

- In the main configuration page, click on the target key you want to assign.
- In the function panel on the right, select “Macro” as the function.
- From the macro list below, select the desired macro (e.g., “New Macro 1”).
- Click the “Save” button.

b. Drag-and-Drop Method:

- Simply click and hold the macro name (e.g., “New Macro 1”) in the list on the right.
- Drag it directly onto the visual key you wish to assign it to on the device layout.
- Release the mouse button to complete the assignment.

3.5.4 Revising and Deleting Macros



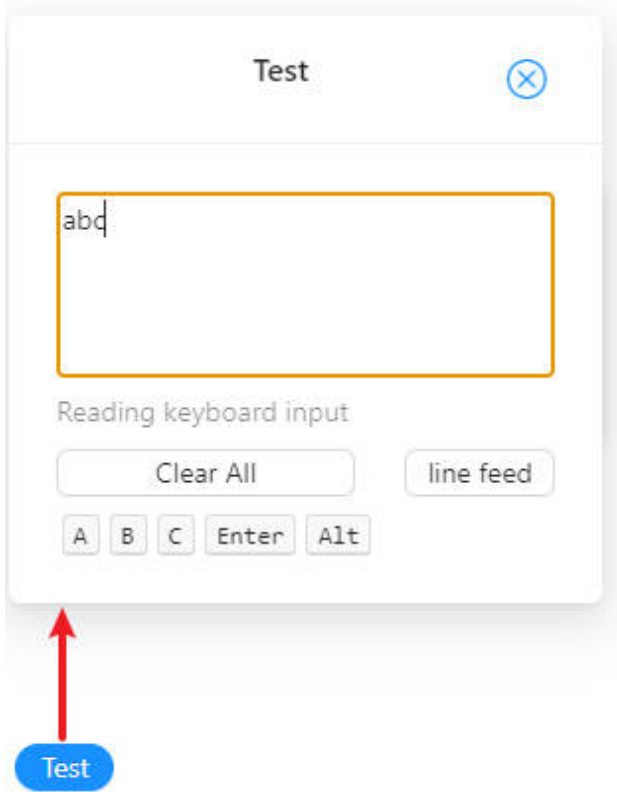
- **To edit (Revise) a macro:** Click the blue “Revise” link next to any macro in the list. This re-opens the Macro Editor for that macro.
- **To delete a macro:** Click the blue “Delete” link next to it.

* **Important:** A macro that is currently assigned to a key cannot be deleted. Its “Delete” button will be grayed out. You must first remove the macro from the key it is assigned to before you can delete it.

* The device can store up to **6** different macros.

4. Testing Your Configuration

The **Test** feature allows you to verify that your key assignments are working correctly before use.



- a. Open the **Test** interface.
- b. Press a configured device. The assigned keystrokes (e.g., abc) or actions will be displayed in the test box.

Purpose: This is the most reliable way to confirm that complex configurations (like Macros or Strings) output exactly as expected.

APPENDIX: RESOLVING SECURITY WARNINGS

Your security software or Windows may flag this installer. This is a common false positive. The software is safe. The warning is triggered by the nature of the executable (.exe) file, not by any malicious code.

Installation Steps:

1. In the security prompt, click "More info".
2. Then, select "Run anyway".

Tip: If the warning continues to block installation, you can temporarily pause your antivirus software. Please remember to turn it back on once setup is complete.

Your Report Helps Us Improve

If you encounter a warning, letting us know is very helpful. Reporting it to our support team allows us to work with security vendors to resolve these false alarms for everyone.

Email: support@lyrixen.com